



Birch Plywood



About Us

> 200 000m³
Plywood production per year

100%
high quality birch

Top
Top 10 manufacturers in China

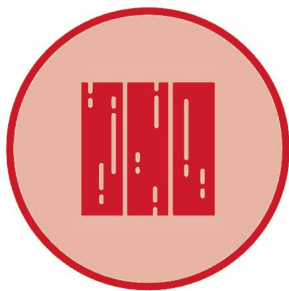
> 70
Country of purchase



INTRODUCTION OF BIRCH PLYWOOD



Plywood is conditioned for use in interiors and exteriors. Since it has 0 cellulose content, it is of no interest to termites & is completely weather-proof.



Comes with pre-pressed 1.4 mm veneers on both sides, so it makes the use of additional laminates optional, unlike any other plywood. It can be painted or stained to achieve any finish.



The plywood which meets E0 / E2 / E3 safe-formaldehyde emission levels ; minimizing any health risks in the long run. Indeed, it is so safe that it is even used to make toys for children.



Made of 100% Birch, with full core & full panel, making core gaps virtually impossible. It's 100% calibration enables 3D router cuttings & designs, making it the perfect plywood.

TECHNICAL SPECIFICATIONS

Thickness Tolerance	±0.2mm
Surface Treatment	Polished/Non-Polished
Face Vneer Cut Type	R/C Or Upon Request
Core	100% Birch
Density	500~630kg/ m ³
Moisture Content	10%~15%
Water Absorpyion	<10%
Glue Emission Level	E0,P2,WBP,E1
Minimum Ultimate Strength MPa	
Shear along the glue layer	1.5
Static bending along the grain	25
Tension along the grain	30
Minimum elastic module,MPa	7000

SIZE & THICKNESS

Thickness(mm)	Standard Size
5,6,7,8,9,10,12, 15,18,20,22,25,30,40	8 ft x 4 ft

CERTIFICATIONS



FSC



CE



CARB



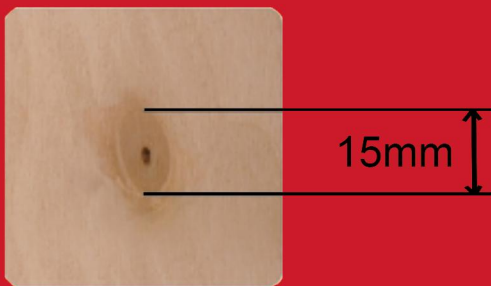
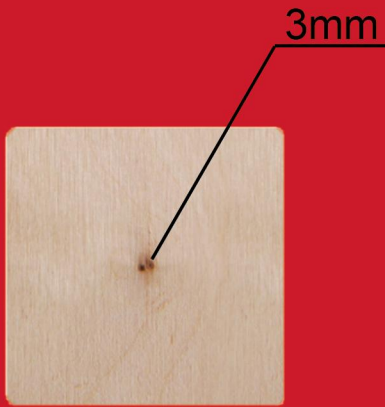
CEC



IAF

B - Birch Plywood

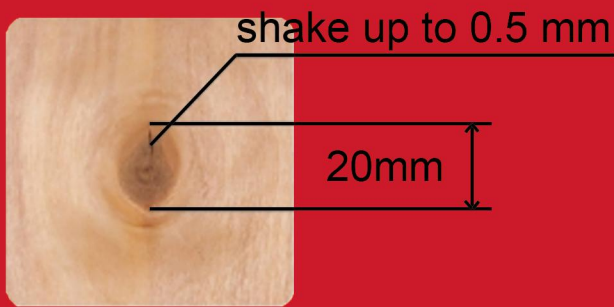
Premium is recommended for visually demanding applications, such as surfaces that are treated with wood stain or varnish.



Pin knots permitted. Other knots and holes permitted up to 3 mm diameter, limited to a cumulative diameter of 15 mm per m^2 . Closed splits and checks permitted up to an individual length of 100 mm and one per metre of panel width. Slight discoloration and streaks permitted.

Other defects strictly limited.

S - Birch Plywood



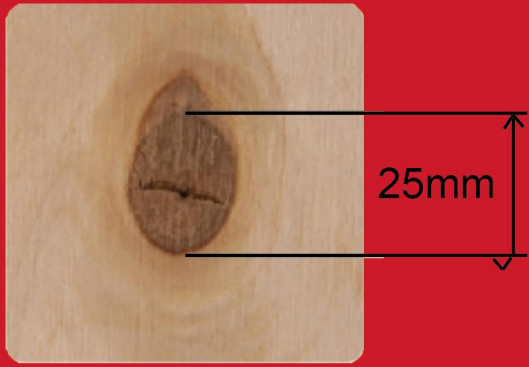
The S quality is suitable as a base for high quality painting.

Pin knots permitted. Sound intergrown knots permitted up to an individual diameter of 20 mm, limited to a cumulative diameter of 50 mm per m^2 . Other knots and repaired holes permitted up to 10 mm diameter, limited to a cumulative diameter of 25 mm per m^2 . Repaired splits and checks up to 2 mm width, length 200 mm limited to one per metre of panel width. Closed splits and checks permitted up to 200 mm length and two per metre of panel width. Discoloration and coloured streaks permitted. One wooden patch/ m^2 permitted.



BB - Birch Plywood

BB is for technical end uses where a sound and even surface is required. For example its light, smooth and even surface offers an optimal base for different overlaying methods.



Pin knots permitted. Sound knots permitted up to 25 mm diameter, limited to a cumulative diameter of 60 mm per m^2 . Other knots and holes permitted up to 6 mm diameter, limited to a cumulative diameter of 25 mm per m^2 . Open splits and checks, repaired, permitted up to 2 mm wide and 200 mm long not exceeding 1 per metre of panel width. Discoloration, roughness and sanding through permitted if all slight. Wooden patches permitted up to 3 % of area. Glue penetration limited to 5 % of panel surface.



CP - Birch Plywood

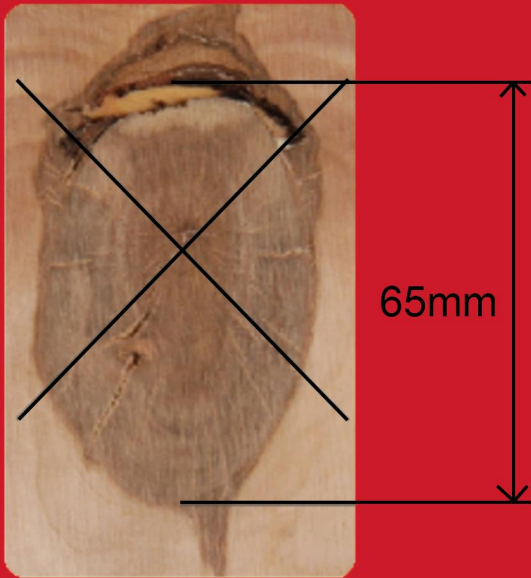
The CP quality is use for constructional purposes where appearance is not important. Open splits, knot holes and other defects are permitted.

CP grade allows the diameter of not more than 6mm of partial accumulation knots, single knots and loose knots, 10 per 1 m² plate surface



WG - Birch Plywood

The WG quality is used in applications where the surface will not be visible or does not have high visual requirements, for example in structures and in packaging.



Pin knots and sound knots permitted up to 65 mm diameter, limited to a cumulative diameter of 600 mm per m^2 . Other knots and holes up to 15 mm diameter limited to a cumulative diameter of 100 mm per m^2 . Open splits and checks up to 4 mm wide and 2 per metre width of panel. Discoloration, streaks, roughness, slight sanding through, glue penetration and patches are permitted.

Plywood Grade description

Flaws in wood and processing defects	Grade B	Grade S	Grade BB	Grade CP	Grade WG
Pin knots	Not more than 3 per square meter	Allowed	Allowed	Allowed	Allowed
Sound intergrown knots	Allowed with diameter not more than 15 mm	Allowed with diameter not more than 15 mm	Allowed with diameter not more than 25 mm	Allowed with cracks not wider than 1,5 mm	Allowed
Other knots	Allowed with maximum diameter 6 mm	Allowed with maximum diameter 6 mm	Allowed with maximum diameter 6 mm	Allowed with maximum diameter 6 mm	Allowed with maximum diameter 15 mm
Closed splits	Maximum length 200 mm	Maximum length 200 mm	Maximum length 300 mm	Allowed	Allowed
Light discoloration	Not allowed	Allowed not more than 5% of the surface	Allowed	Allowed	Allowed not more than 75% of the surface
The surface layer bulges	Not allowed	Not allowed	Allowed the maximum length allowed is 200mm	Allowed the maximum length allowed is 600mm	Allowed the maximum length allowed is 600mm
Glue penetration (through faces)	Not allowed	Not allowed	Allowed not more than 2% of the surface of the panel	Allowed not more than 5% of the surface of the panel	Allowed not more than 10% of the surface of the panel
Veneer overlapping	Not allowed	Not allowed	Allowed with maximum length 100 mm	Allowed with maximum length 300 mm	Allowed with maximum length 600 mm
Repairing by plugs	Not allowed	Allowed	Allowed with single plugs	Allowed with double plugs	Allowed with double plugs
Sanding through faces	Not allowed	Not allowed	Not allowed	Not allowed	Allowed not more than 1% No more than 1% of the surface
Glue plate layer particles	Not allowed	Not allowed	Not allowed	Allowed with maximum length 150 mm	Allowed with maximum length 150 mm